

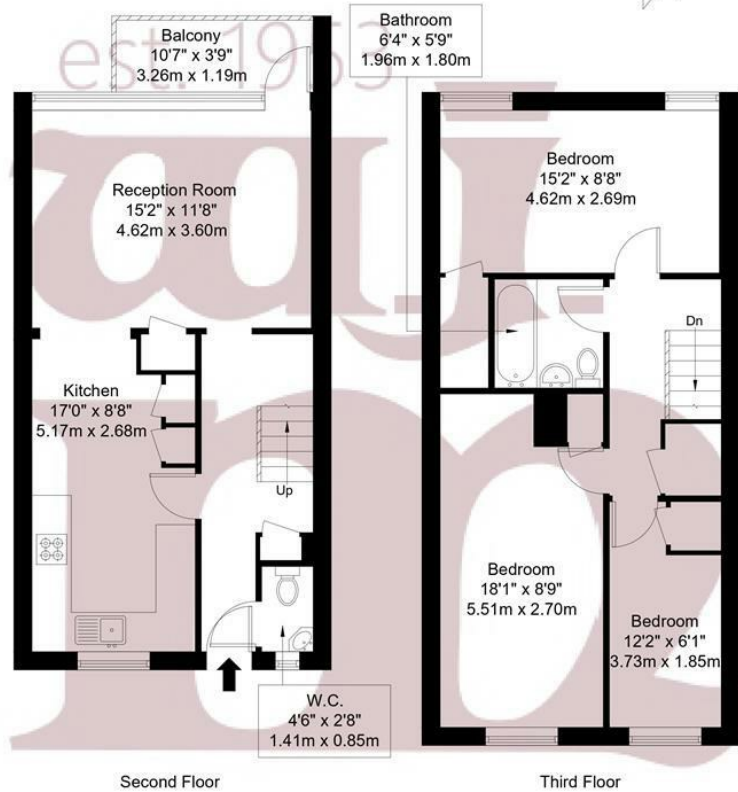


ST STEPHENS ROAD, BOW, E3

£2,800 PER MONTH

- HMO Licence (available for Sharers)
- Arranged over Two Floors
- Balcony
- Available end of August
- Spacious Lounge
- Offers over £2500pcm

wj.  
meade



Approx Gross Internal Area = 89.05 sq m / 958 sq ft  
 Balcony = 3.88 sq m / 42 sq ft  
 Total = 92.93 sq m / 1000 sq ft

The Floor plan is not to scale and measurements and areas shown are approximate and therefore should be used for illustrative purposes only. The plan has been prepared in accordance with the RICS code of Measuring Practice and whilst we have confidence in the information produced it must not be relied on. Maximum lengths and widths are represented on the floor plan. If there is any aspect of particular importance, you should carry out or commission your own inspection of the property. Copyright @ BleuPlan



W J Meade are delighted to offer this three bedroom flat arranged over two floors to rent. Compromising a large fitted kitchen/diner leading onto a south facing lounge with balcony, ground floor guest W/C, three bedrooms, and family bathroom. The property is situated close to Roman Road market and shops, seconds away from Victoria Park, bus routes leading to the city and Canary Wharf, ideal for sharers. Offers over £2,800pcm.

Deposit is 5 week's rent.

Council Tax Band C.

Service charge £n/a

Ground rent £n/a

Reserve fund £n/a

n/a years lease

Council tax band C

Current EPC Rating 79

Tenure:



All sizes are approximate. The Agent has not tested any apparatus, equipment, fixtures and fittings, or services and so cannot verify that they are in working order or fit for the purpose. A buyer is advised to obtain verification from their Solicitors or Surveyor. Photographs are for illustration purposes only and may depict items, which are not for sale or included in the sale price. References to tenure of a property are based upon information supplied by the vendor. The agent has not had sight of the title documents, a buyer is advised to obtain verification from their solicitor. Money Laundering Regulations 2003: Intending purchasers will be asked to produce identification, documentation at a later stage and we would ask for your co-operation in order that there will be no delay in agreeing the sale.

These particulars are intended to give a fair description of the property only and are in no way guaranteed, nor do of any contract. They are issued on the express condition that all negotiations are conducted through W.J. Meade Estate Agents. All subject to contract and to being unsold.